

Corporate Philosophy

NISSHO ELECTRONICS Group contributes to communities as “*Your Best Partner*”
- a loyal, trustworthy partner - to our customers, partners,
and all stakeholders both at home and abroad.



Pushing the boundaries of innovation is in the NISSHO ELECTRONICS Group’s very DNA.
Utilizing the latest technologies from around the world,
we provide the optimal solutions and services for our customers.



NISSHO ELECTRONICS Group and all of its employees comply with all domestic
and international laws and regulations, as well as our own internal regulations,
to operate transparently as a business that strictly follows all societal norms.

Creating an innovative future together with you

Using our foresight to discern the future one step ahead, NISSHO ELECTRONICS provide cutting-edge ICT and realize digital transformation for the customer.

We harness the power of digital solutions to evolve your business, and promise to deliver solid results.

CEO's Message

2019 marks 50 years since the founding of NISSHO ELECTRONICS CORPORATION. It is only the support of all of you over the many years that has made this possible, and for which we are truly grateful.

We provide cutting-edge information and communication technology (ICT) such as cybersecurity, IoT, and AI, as support for customers as they undergo the process of digital transformation. In addition, we are engaged in global expansion and are constantly exploring ways to provide the best services in new fields as well. Today ICT is not important only within our industry, it is also an essential element in sustainable growth for every kind of business. NISSHO ELECTRONICS CORPORATION is motivated by a profound desire to continue as an IT trading company that keeps a close eye on what is happening, and an "Innovation-Leading Company" that consistently focuses on cutting-edge fields of each generation. We have engaged in projects that transcend industry boundaries through partnerships, using the strengths of everyone involved, to the advantage of all.

Our corporate philosophy is summed up in the slogan "*Your Best Partner,*" and, in that spirit, we are looking forward to earning ongoing customer trust in a fresh sprint towards our next 50 years. We look forward to this with the same level of excitement as at a new company launch.



Shinichi Teranishi

President & CEO

NISSHO ELECTRONICS CORPORATION

A handwritten signature in black ink, appearing to read 'S. Teranishi', positioned below the printed name and title.

Turning our 3 core strengths into a driver of your progress

NISSHO ELECTRONICS' 3 core strengths for bringing innovation to the ICT environment, combined with forefront facilities and services to support them, drive the customer's business to progress.

Strength

01

Foresight

Discerning the next innovation and forging the customer's future

Our sights are always set on the customer's future. And our foresight is based on experience gained since our establishment of discovering the latest technologies from Japan and around the world. We use this foresight to provide on-trend technologies and solutions that support the future of the customer's business.



Strength

02

Technology

Drawing on our track record of expertise to bring cutting-edge ICT into your business

Our extensive track record is proof of our technical expertise. Using our capability to implement cutting-edge ICT technology and our knowledge accumulated over the years, we have lived up to the trust of customers from enterprises to service providers.



Strength

03

Advisory

Proposing new approaches as your partner in business co-creation

We look at the customer's business now through the lens of the market tomorrow, and use technology to open new doors. By proposing new approaches, we support the digital transformation of the customer and realize business co-creation.



Our Strengths 2

Our activity base integrating the technical expertise of NISSHO ELECTRONICS displays cutting-edge equipment by various vendors on 120 racks, conducts performance and reliability verification tests, and provides training and demonstrations using actual equipment.

Our base in Silicon Valley acts as an agent of cutting-edge technology to cultivate solutions that meet customer needs, and deliver information on the latest trends in ICT.

Our Quality Control Center covers three functions - logistics, inspection, and quality control and improvement - in order to provide the customer with cutting-edge ICT systems in reliable carrier-grade quality.

NETFC

NETFrontier Center



NEA

NISSHO ELECTRONICS (U.S.A.) CORPORATION



Quality Control Center



"Your Best Partner"

Innovation-Leading Company

NCPF

Nissho Cross Platform



Training Courses



Nissho Cross Platform is a brand that provides operation and monitoring services for ICT infrastructures, Security Operation Center (SOC) services, and supplementary services to maximize and support stable operation of the customer's system.

We provide vendor certification courses in networks and computing, and a wide range of training courses in subjects such as RPA and OCR. Learners may select a course by level and objective.

Supporting your business broadly with cutting-edge ICT

Drawing on our technical expertise backed by experience, NISSHO ELECTRONICS provide cutting-edge ICT from around the world in the high quality demanded by the Japanese market.

We support a broad range of customer operations, from ICT infrastructure to applications to global expansion.



Networks

We provide optimal communications environments, automation that can be operated and monitored by small numbers of people, and other forefront, stable products that look to the future along with advanced technical support.

- Backbone network
- SD-WAN / SD-LAN
- Access network



Cybersecurity

Cybersecurity is indispensable for the customer for whom ICT is a business advantage. With cutting-edge technologies and services, we support improvements in the customer environment from “as-is” to “to-be.”

- Network security
- Cloud security
- Managed security services (MSS)



Computing

We provide hybrid cloud infrastructures centering on hyper converged infrastructures as well as assessment, consulting, and support services.

- Converged infrastructure
- Server
- Storage



Cloud

Through the operation of use-based, cost-efficient, and simple multicloud environments, we provide infrastructures and integration services optimized to the application or the customer environment.

- Multicloud
- Hybrid cloud
- IoT platform



Business Solutions

We contribute to process advancement and productivity improvement by taking business solutions for supporting customer operations and further evolving them with leading technologies such as RPA and AI.

- Business process management
- Customer engagement
- Enterprise content management



Overseas Business

With group companies in Vietnam and Indonesia, we help construct networks and ICT infrastructures for communications carriers and enterprises throughout Southeast Asia, and practice new businesses tailored to each country. We also provide offshore software development services.

With sights set on the forefront and beyond

NISSHO ELECTRONICS take on the challenge of constantly providing new value amid a rapidly changing business environment.

With solutions looking to the next generation of society and business, we realize digital transformation for the customer.

DevOps /SRE



We cultivate SoE technology and public cloud knowledge to help create and expand the customer's business. Through cloud professional services in the fields of SRE and data insight, we aim for business co-creation with the customer.

Cyber-security



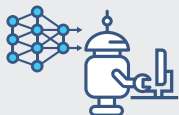
Our aim is to develop solutions around cutting-edge technologies such as AI toward strengthening resilience and achieving damage control against cyberattacks. We provide total security solutions optimal to the customer environment, including managed services in operational design and support after introduction.

IoT



We use IoT (telematics cloud) services with communications equipment built into the dashcam to raise awareness of safe driving, analyze accumulated data to avoid accidents to the customer's vehicle, and promote eco-driving to contribute to cost reductions. For customers planning in-house use, we also provide cloud-based IoT platforms.

RPA/AI



With the use of RPA, software robots take over simple tasks and allow humans to focus on creative work. In future, we hope to explore the use of AI technology in collaborative environments between digital labor and humans.

Work Style Reforms



We offer an array of solutions for supporting work style reforms, such as VDI, web conferencing systems, and lunch order and payment services. The optimal advice we provide to our customers is based on experience; we introduce these solutions and verify them in our own offices.

Achieving growth together with you

NISSHO ELECTRONICS fulfill our corporate social responsibility (CSR) through sound, sincere business activities that in multiple ways contribute to our stakeholders including customers, suppliers, community, and employees.



Compliance

We strive to maintain the trust of society by promoting thorough adherence to standards of behavior, compliance with laws and regulations, and fair business activities; and through enriched company-wide mechanisms such as regular compliance training and a whistleblowing system.



REGISTERED ORGANIZATION
No.0415-ISO9001
No.E373-ISO14001
No.I148-ISO27001

Quality / Environment / Information Security

In order to accomplish our mission of providing safe, reliable services and actively addressing environmental issues, we obtain third-party certification and operate management systems for quality (ISO 9001), the environment (ISO 14001), and information security (ISO 27001).



Personal Information Protection

Under the belief that it is our duty as a company to recognize the importance of and ensure the appropriate management of personal information, we take all possible measures to ensure personal information protection including having in place a policy, operating a management system, and striving for continuous improvement.



Environmental Activities / Philanthropy

We practice environment-conscious operations toward addressing environmental issues through routine corporate activities. Our offices make efforts to save electricity, reduce paper, separate garbage, increase recycling, and promote green procurement.



Social Media Policy

We use social media based on full recognition of the impact of information dissemination. In order to ensure compliance, we never disclose secrets obtained during the course of our work, and we never relay information that may cause disadvantage to our stakeholders.